

Climate Change Program

Community Climate Resilience Center (CCRC)

A community-led approach towards resilience

Climate change is obvious and impacts the life and livelihoods of vulnerable people. Bangladesh, one of the climate-vulnerable countries, faces manifold and massive climate impacts. Especially the coastal areas are highly exposed to tropical cyclones, tidal surge, river bank erosion, sea level rise and high salinity intrusion, putting lives and livelihoods in danger. The Climate Change Program of the Christian Commission for Development in Bangladesh (CCDB) addresses these risks with an aim to create climate resilient communities.



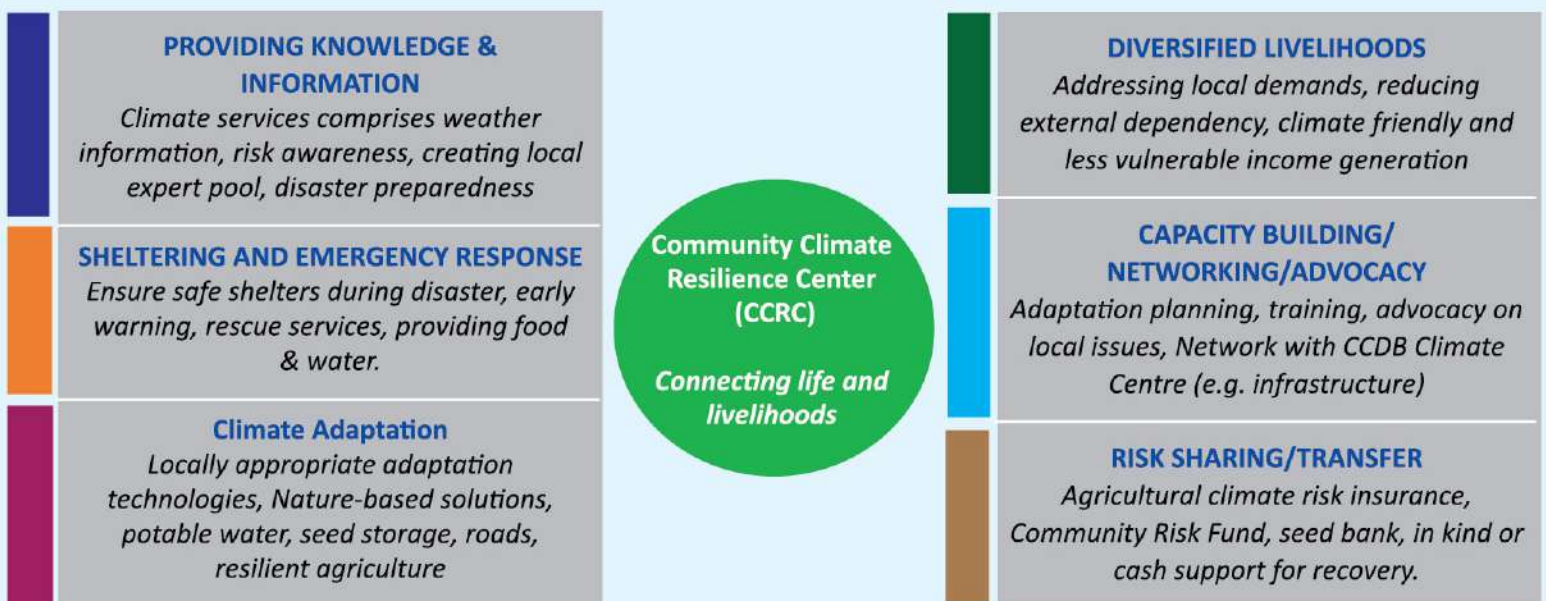
BRING PEOPLE IN ACTION

Collective actions using local resources and knowledge are extremely essential to be climate resilient in a particular vulnerable area. The vulnerable community needs to understand their vulnerability, explore the corresponding solutions and plan to act together. CCDB strengthens community people to come forward by quantifying household-based climate risks and creating a community-led peoples' platform Community Climate Resilience Center (CCRC), with the people from all walks of life regardless of class, occupation, gender, caste, and religion. The approach of forming a joint climate platform comes from the initiative of the community members themselves: They know that they can manage growing climate risks only together.



CONNECTING LIFE AND LIVELIHOODS

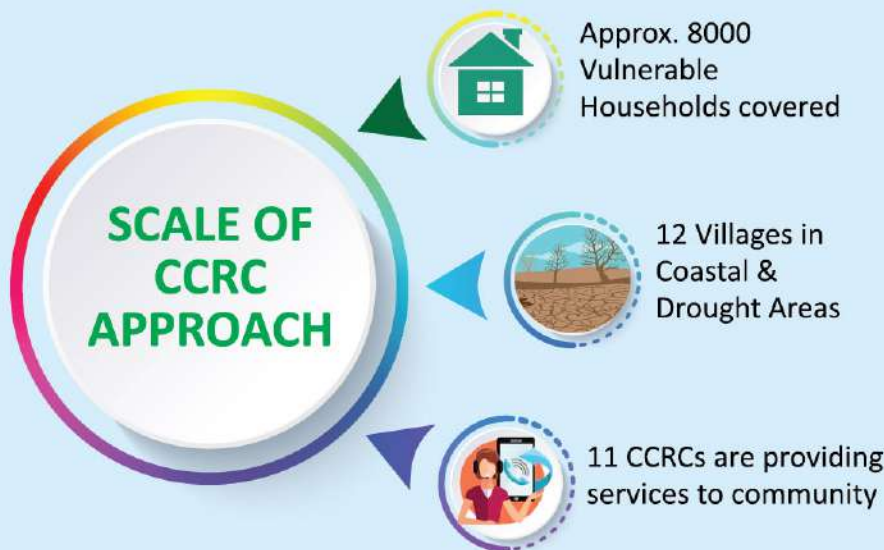
The strategic theme was to establish the CCRC as a solution center where vulnerable people are taking a systematic approach to reduce their vulnerability towards climate risks. CCDB strengthens the capacity of the CCRC, so that this peoples' platform can initiate innovative initiatives based on needs where community people will be connected to improve their life and livelihoods. CCDB and the community partners identified six core areas for connecting lives and livelihoods of the vulnerable community people in a way that leads to enhanced climate resilience.



TRANSFORM TO RESILIENCE

The third element of CCRC's Transform to Resilience strategy is to strengthen community structures, promote ownership, focus on solution-oriented approaches, ensure the sustainability of CCRC as an organization, and create a transparent governance system.

<p>01 Ownership</p>	<p>02 Implementation</p>	<p>03 Sustainability</p>	<p>04 Governance</p>
<p>A community-based organization which is established and led by the local people. The executive committee is elected every 2 years by the community people. People find their solutions which enhance the ownership.</p>	<p>All decisions regarding adaptation planning, implementation, management, negotiation with local government and institutional capacity building are taken in a participatory way.</p>	<p>The CCRC has its own fund-raising plan and mechanism. Sources of income are diversified. The cyclone shelter is used as Community Resilience Center by the CCRC.</p>	<p>Transparency in implementation and fund management, accountability to the community people, fair representation of all population groups and social auditing.</p>



Traditional Cyclone Shelter is being used as Community Resilience Center

You are most welcome to visit CCRC

Contact us:
Palash Sarker
 Coordinator- Resilience Building
CCDB, Senpara Parbata
 Dhaka-1216, Bangladesh
 ✉ palash@ccdbbd.org
 ☎ + 880-1717217620